

**Unwind** in the picturesque Eola-Amity Hills, a hidden gem along the 45th parallel. This gently rolling “wrinkle in the valley” is a harmonious blend of the Eola and Amity Hills that spans nearly 40,000 acres, with over 1,300 acres dedicated to thriving grapevines. The lush, dynamic landscape offers a serene respite, marked by its breathtaking views of Mt. Jefferson and the remarkable Van Duzer Corridor.

**Uncork** the finest Chardonnay, Pinot Noir, Gamay Noir, and other cool-climate varietals. The Van Duzer Corridor, a remarkable natural feature, ushers in cool ocean winds that help maintain the perfect balance of acidity in these exceptional wines. The shallow volcanic soil mixed with ancient lava and marine rocks makes it ideal for growing grapes.

**Unearth** the hidden treasures of the Eola-Amity Hills – where nature, wine, and serenity converge.



EOLA-AMITY HILLS AVA  
**WINERIES &  
TASTING ROOMS**  
DRIVING MAP



*Stay, Sip, Savor*

Regional Map



**EOLA-AMITY  
HILLS**

[www.eolaamityhills.com](http://www.eolaamityhills.com)



This project has been funded in part by an Oregon Wine Country License Plates Matching Grant





# EOLA-AMITY HILLS AVA WINERIES & TASTING ROOMS

See map inside for locations

- ANTICA TERRA
- BETHEL HEIGHTS VINEYARD
- BJORNSON VINEYARD
- BLED SOE MCDANIELS
- BRAVURO CELLARS
- BROOKS WINERY
- BRYN MAWR VINEYARDS
- CHEMEKETA CELLARS  
NW WINE STUDIES CENTER
- CHERRY HILL WINERY
- COROLLARY ESTATE
- CRISTOM VINEYARDS
- CUBANISIMO VINEYARDS
- DAVID PAIGE WINES
- DOMAINE 524
- DUKES FAMILY VINEYARDS
- ELEMENTAL CELLARS
- EOLA HILLS LEGACY
- EVENING LAND
- EVESHAM WOOD WINERY
- GC WINES
- IOTA CELLARS
- ITERUM WINES
- HUDAK HOUSE
- KRISTIN HILL WINERY
- LINGUA FRANCA
- MYSTIC WINES
- PERKINS HARTER WINES
- REDHAWK WINERY
- RIZZO VINEYARD & WINERY
- STANGELAND VINEYARD
- TEKSTURA WINES
- THOMAS GERRIE CELLARS
- VARNUM VINTNERS
- WALTER SCOTT WINES
- ZENITH VINEYARD

# EOLA-AMITY HILLS AVA VINEYARDS

- 1 Aberg 2-A
- 2 Aeolus 8-E
- 3 Anahata 8-C
- 4 Anna-Louise 3-E
- 5 Antica Terra 3-B
- 6 Argyle Sprit Hill 7-D
- 7 B & J 4-C
- 8 Bethany Heights 12C
- 9 Bethel Heights Estate 8C
- 10 Bieze 6E
- 11 Big Cheese 2D
- 12 Binary 3D
- 13 Björnson Estate 7E
- 14 Bledsoe/McDaniels-Coulee Estate 4E
- 15 Blossom Ridge 12C
- 16 Bois Joli 2B
- 17 Bracken 11C
- 18 Bravuro Cellars 2D
- 19 Breaker 2D
- 20 Brooks Estate 3D
- 21 Bryn Mawr Estate 8C
- 22 Buckhaven 2C
- 23 Canary Hill 13C
- 24 Carlile's Crest 5C
- 25 Carter 13B
- 26 Catalyst Ridge Wines 12C
- 27 Catrall 4C
- 28 Chemeketa 14E
- 29 Cherry Hill Estate 10A
- 30 Choppo's Block 4C
- 31 Clos des Oiseaux 8D
- 32 Clos Griotte 3D
- 33 Cook's Cedar Hill 11A
- 34 Corollary Estate 5C
- 35 Cortell Rose 3D
- 36 Crannell 3D
- 37 Cristom 8D
- 38 Cubanisimo Estate 13D
- 39 David Paige Wines 2E
- 40 Daffodil Hill 11C
- 41 Distraction 2D
- 43 Drouhin 2E
- 43 Dubai 2D
- 44 Dukes Family Estate 2C
- 45 Elton-Willamette Valley 4E
- 46 Eola Hills Legacy Estate 13C
- 47 Eola Springs 11B
- 48 Erickson 11B
- 49 Evening Land 6E
- 50 Fall Wind Vineyard 3D
- 51 Felz 7E
- 52 Five Points 4C
- 53 Golden Hillside 2D
- 54 Hidden Rocks Estate 1D
- 55 Holloran La Chenaie 11B
- 56 Hoodview 3E
- 57 Jerusalem Hill 5F
- 58 Jessie James 2D
- 59 JMD-Cherles Bayless 4D
- 60 Jubilee 3C
- 61 Jubilee Block 3 3C
- 62 Julon 11B
- 63 Justice 8C
- 64 Hudak House 12C
- 65 Kestrel Heights 5D
- 66 King Creek 7E
- 67 Koosah 5C
- 68 Le Pults Sec 11F
- 69 Les Stephens 3E
- 70 Lewman 8C
- 71 Lingua 6F
- 72 Loose Leaf 4C
- 73 Lynx Hill 7E
- 74 Mad Hill 2A
- 75 Mclain 2D
- 76 Muddy Paws 14D
- 77 Muska 3E
- 78 Mystic Wines 3E
- 79 Nobel Mountain 7C
- 80 Northridge 11D
- 81 Nuestro Sueno 12B
- 82 Oak Grove 14C
- 83 Orchard House 12C
- 84 Palmer Creek 2D
- 85 Pearlstad 8C
- 86 Redford-Wetle 3E
- 87 Rooker 5B
- 88 Pelos Sandberg 3C
- 89 Poco 3D
- 90 Prophet 8C
- 91 Redhawk Estate 11F
- 92 Rizzo 5E
- 93 Rodeo Hills, Cherry 7E
- 94 Roserock Drouhin Oregon 11E
- 95 Royer 11C
- 96 Seven Springs 6E
- 97 Sojeau 11C
- 98 Sometimes A Grape Notion 11A
- 99 Stand Sure 8C
- 100 Stangeland Estate 7F
- 101 Stiling 3E
- 102 Sunset View Ranch 6B
- 103 Symbion 2D
- 104 Temperance Hill 8C
- 105 TerraFe Estate 13D
- 106 Three Angels 2D
- 107 Three Trees 2C
- 108 Toluca Lane 2C
- 109 Tunkalilla 8D
- 110 Valfontis 8E
- 111 Vanjohn 2D
- 112 Vermeer 11D
- 113 Vivid 2D
- 114 von Oehsen 7E
- 115 Wahle - Holmes Hill 10A
- 116 West Hills 14D
- 117 Willakia 2C
- 118 Windfall 8B
- 119 Witness Tree Estate 8E
- 120 Wolf Hill 14C
- 121 Z'Ivo 2E
- 122 Zena Crown 8E
- 123 Zeitoun 3D
- 124 Zenith 9C

## CONSIDER TAKING THE WHEATLAND FERRY

### Ferry Information:

Toll \$3 CASH ONLY  
Open seasonally and weather permitting.  
Call ahead for schedule and operating hours.  
503-588-7979



Wheatland Ferry operating status, hours and fees.



**American Viticulture Area** - Established in 2006

**Primary Soil** - Marine Sediment & Volcanic Basalt

**Primary Grapes** - Pinot Noir, Chardonnay, Pinot Gris, Pinot Blanc, Grüner Veltliner, Riesling, Gewürtztraminer, Sauvignon Blanc, and Gamay Noir.

Drink Responsibly

### Unwind

with an overnight stay in one of our many charming bed & breakfasts or nearby luxury hotels.

### Uncork

a bottle of Oregon's finest Chardonnay, Pinot Noir, Gamay Noir, and other cool-climate varietals.

### Unearth

the unique landscape of the rolling Eola-Amity Hills with views of Mt. Jefferson and the Van Duzer Corridor.





### Vineyards

1 See other side for complete list with names and numbers

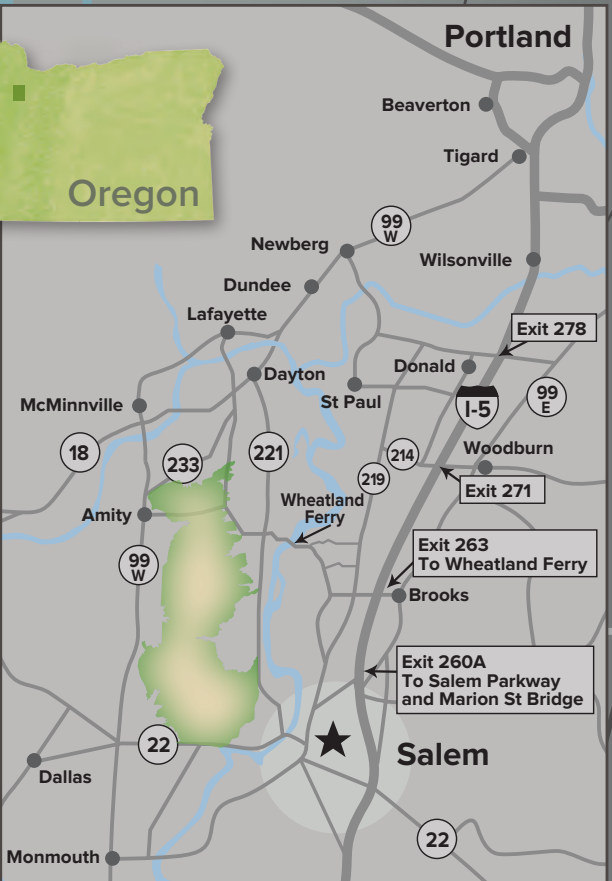
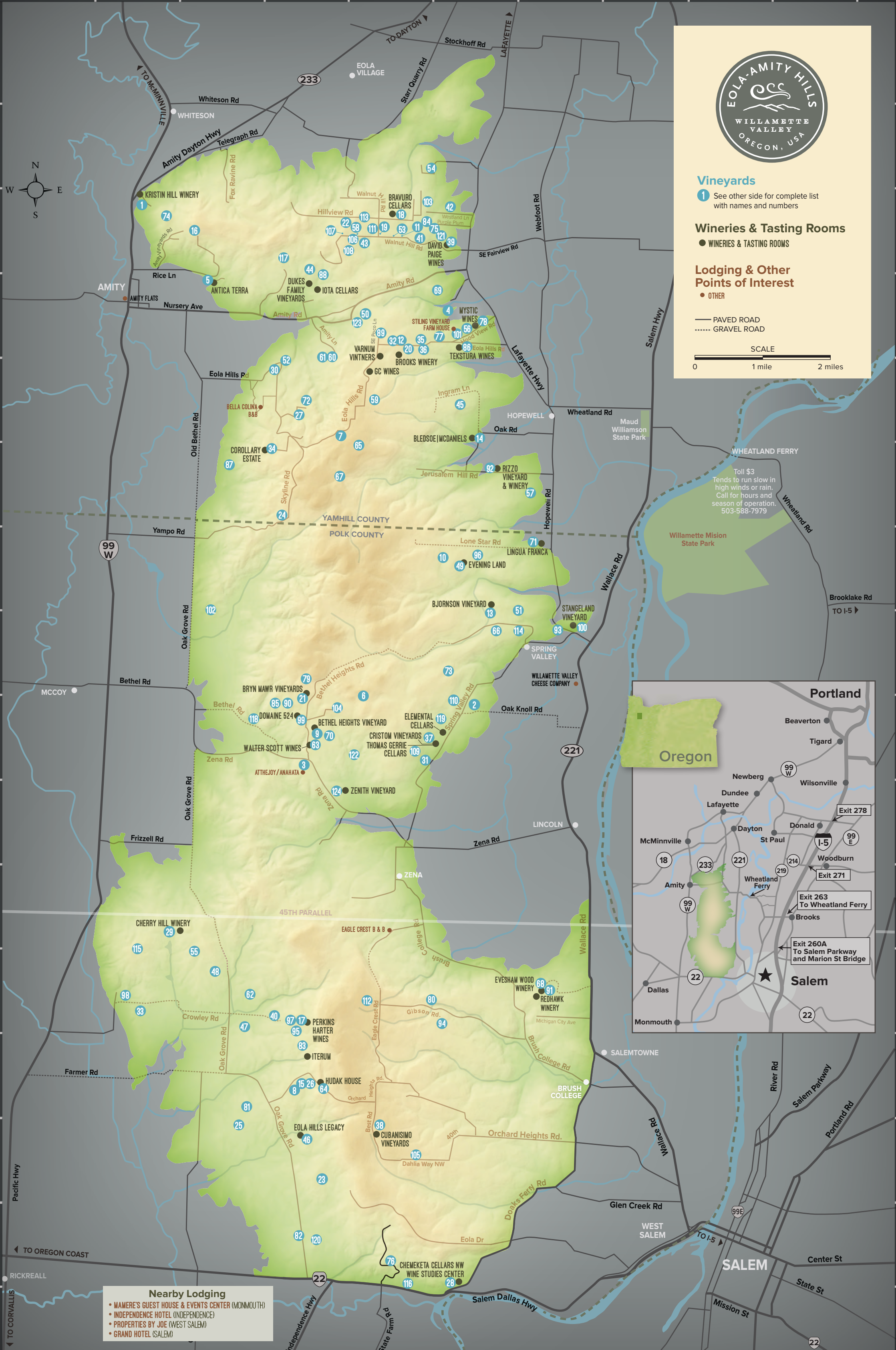
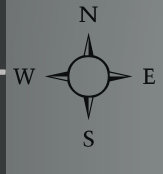
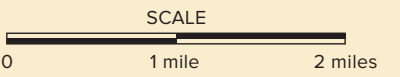
### Wineries & Tasting Rooms

● WINERIES & TASTING ROOMS

### Lodging & Other Points of Interest

● OTHER

— PAVED ROAD  
- - - - - GRAVEL ROAD



- Nearby Lodging**
- WAMERE'S GUEST HOUSE & EVENTS CENTER (MONMOUTH)
  - INDEPENDENCE HOTEL (INDEPENDENCE)
  - PROPERTIES BY JOE (WEST SALEM)
  - GRAND HOTEL (SALEM)

Toll \$3  
Tends to run slow in high winds or rain.  
Call for hours and season of operation.  
503-588-7979